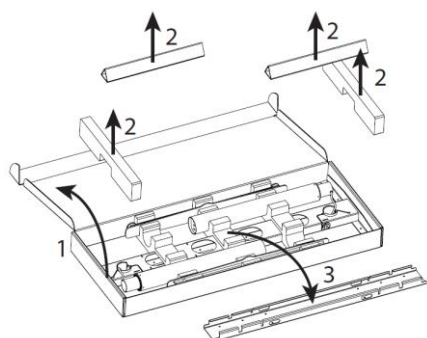
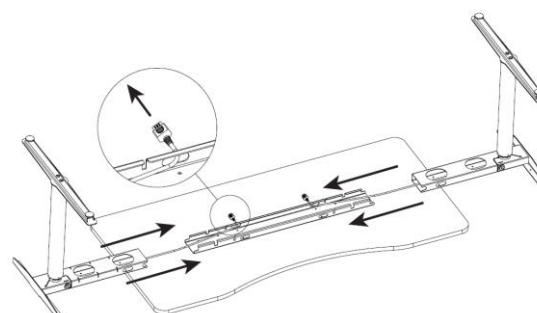


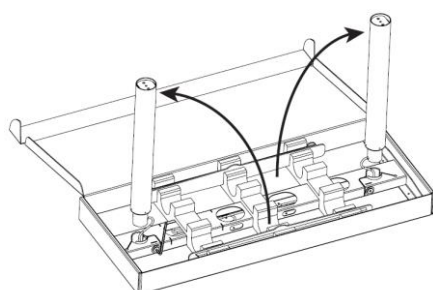
Montagehandleiding voor telescopisch frame (met MC-RD1)



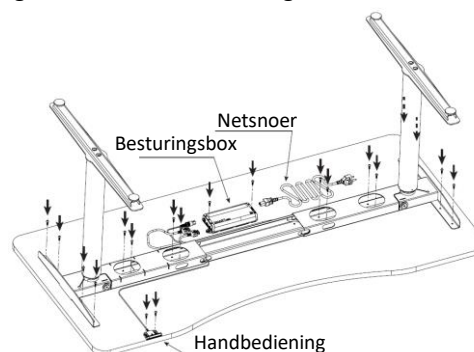
1. Open een doos
2. Verwijder kartonnen en piepschuim
3. Haal de tussenbalk uit de doos



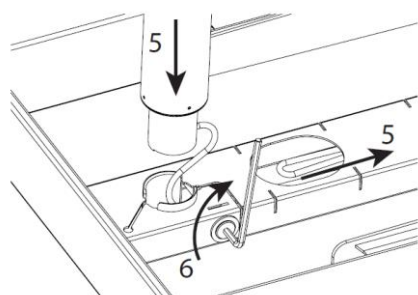
8. Schuif de tussenbalk in de twee zijdelen en begeleid de kabel door het gat van de tussenbalk



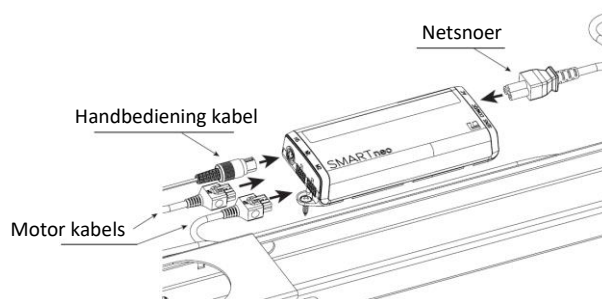
4. Plaats de zuilen in de juiste positie



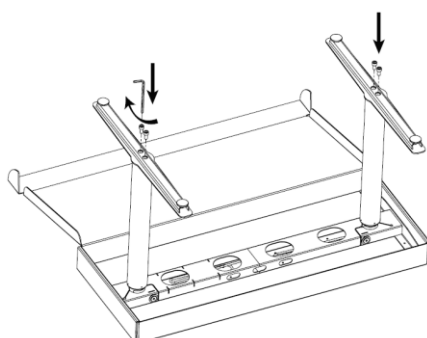
9. Schroef het frame, de besturingsbox en bediening vast aan het tafelblad



5. Plaats de zuil in de opening terwijl u de kabel begeleid door het frame
6. Draai de schroef aan



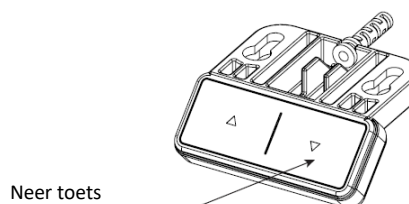
10. Plug alle kabel connectoren in de juiste poort(en) van de besturingsbox



7. Plaats beide voeten op de zuilen en draai deze vast

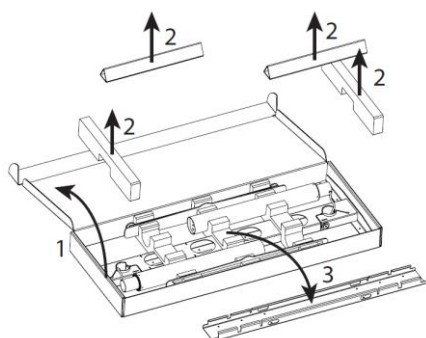
RESETTEN/CALIBREREN

Houdt de 'neer' toets ingedrukt totdat de zuilen helemaal ingelopen zijn en een klein beetje weer omhoog bewegen. Laat dan de toets los. Wacht 10 seconden en de tafel is klaar voor gebruik.

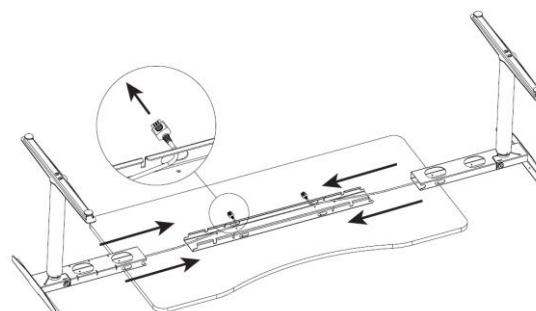


Neer toets

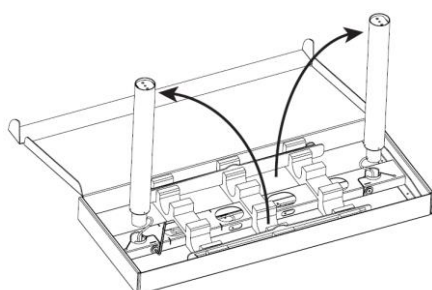
Assembling manual for telescopic frame (with MC-RD1)



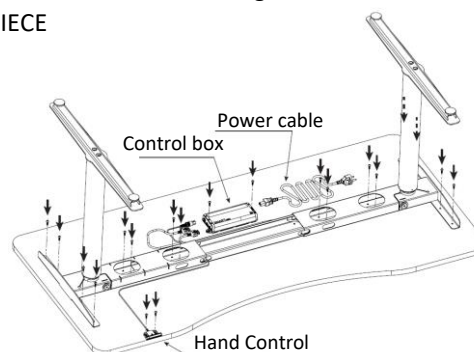
1. Open a box
2. Remove cartons and foams from end
3. Take out MIDDLE PIECE



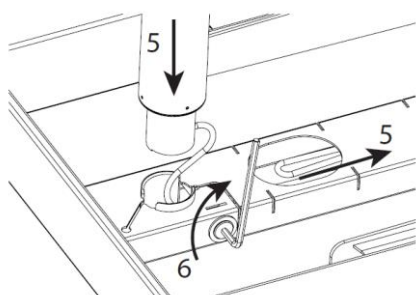
8. Slide the MIDDLE PIECE into the SIDE Beams and take cable out through the hole of MIDDLE PIECE



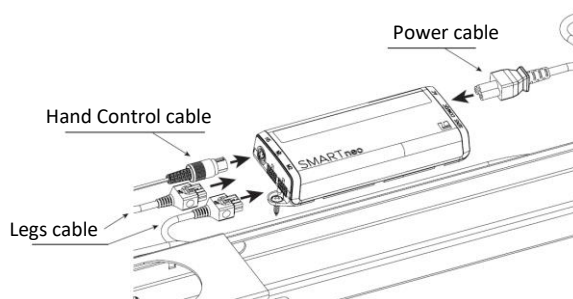
4. Pick up legs in correct position



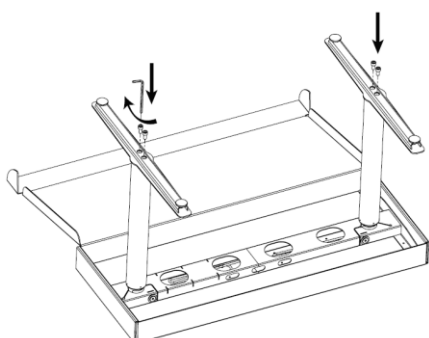
9. Screw down the TABLE FRAME, CONTROLBOX and HAND CONTROL onto the TABLE TOP



5. Put a leg into the hole pulling cable further together
6. Tighten screw



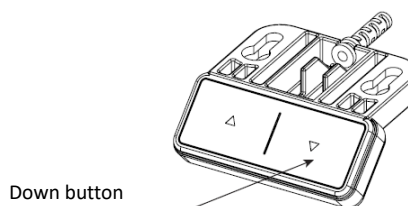
10. Plug all cable connectors into CONTROLBOX in proper sockets



7. Put both feet on legs and screw them

RESET/CALIBRATION

Press and hold DOWN BUTTON until the columns go full down and a little bit up, then release it. Wait for 10 seconds and then the table is ready for use.



Down button